

## Riddles – 2013

/The answers are in the end of paper/

### Riddle of January



### Riddle of February



## Riddle of March



## Riddle of April



## Riddle of May



## Riddle of June



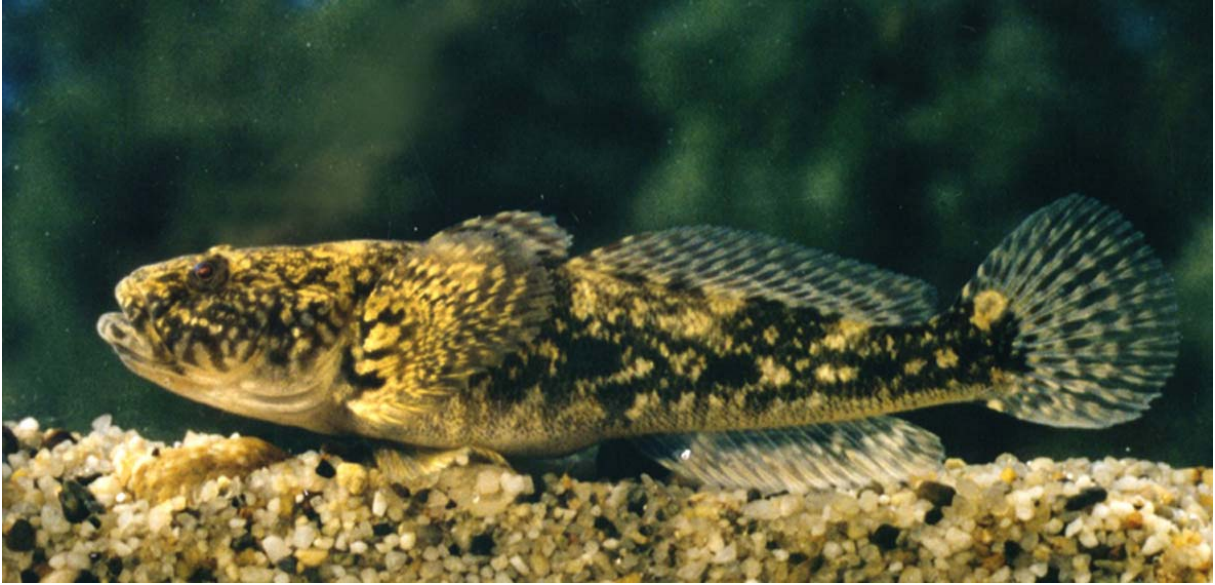
## Riddle of July



## Riddle of August



## Riddle of September



## Riddle of October



## Riddle of November



## Riddle of December



### **The winners:**

**János Eszes (Újszász)**

**Gyula Kopasz (Jólész/Jovice)**

**Béla Kovács (Debrecen)**

**Zoltán Mátyus (Karcag)**

**Zsolt Pápai (Túrkeve)**

**Zoltán Rózsa (Debrecen)**

**Kornél Tóth (Nyékládháza)**

**Vince Túróczi (Tiszapüspöki)**

## Answers:

- January: Ide (*Leuciscus idus*).
- February: Volga pikeperch (*Sander volgensis*).
- March: East European bream (*Vimba vimba*).
- April: Spined loach (*Cobitis elongatoides*).
- May: Asp (*Aspius aspius*).
- June: White bream (*Blicca bjoerkna* previously *Abramis bjoerkna*).
- July: Chub (*Squalius cephalus* previously *Leuciscus cephalus*).
- August: Schraetzer (*Gymnocephalus schraetser*).
- September: Kessler's goby (*Ponticola kessleri* previously *Neogobius kessleri*).
- October: Pumpkinseed (*Lepomis gibbosus*).
- November: Ruffe (*Gymnocephalus cernuus*).
- December: Kessler's gudgeon (*Romanogobio kesslerii* previously *Gobio kessleri*).